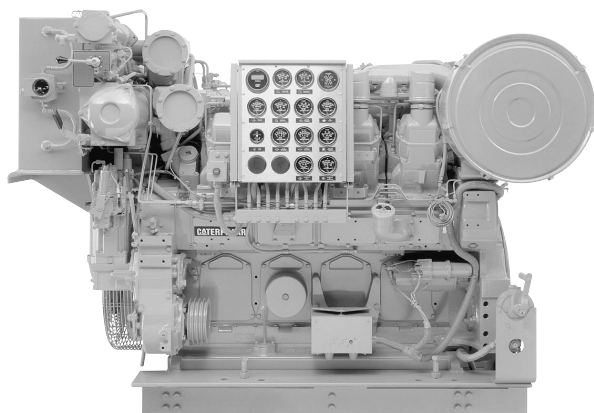




Marine Auxiliary Engine

3508

600 bkW (804 bhp) 815 mhp @ 1200 rpm



Shown with
Accessory Equipment

STANDARD EQUIPMENT

Air Inlet System

Corrosion-resistant aftercooler core (air side), regular duty air cleaner with service indicator, turbocharger 152 mm (6 in.) OD

Cooling System

Jacket water pump, expansion tank, oil cooler, thermostats and housing

Exhaust System

Air-shielded water cooled exhaust manifold and turbocharger, 203 mm (8 in.) ID round flanged outlet

Flywheel and Flywheel Housing

SAE No. 00 (151 teeth)

Fuel System

RH fuel filter with service indicators, fuel transfer pump

Instruments

RH instrument panel with oil pressure, water temperature, and fuel pressure gauges; oil filter differential pressure gauges; service meter

Lube System

Top-mounted crankcase breather, RH oil filter and oil level gauge, shallow sump oil pan

Mounting System

Engine length mounting rails, 254 mm (10 in.); C-channel

Power Take-Offs

Upper RH accessory drive, single-sided front housing

Protection System

Electrical shutoff for air inlet, oil pressure, water temperature, overspeed; RH manual shutoff

General

Vibration damper and guard, Caterpillar yellow paint, lifting eyes

SPECIFICATIONS

V-8, 4-Stroke-Cycle-Diesel

Displacement 34.5 L (2105 cu. in.)

Bore 170 mm (6.7 in.)

Stroke 190 mm (7.5 in.)

Aspiration Turbocharged-Aftercooled

Governor Hydra-mechanical

Engine Weight, Net Dry (approx) .. 5148 kg (11350 lb)

Capacity for Liquids

Cooling System (engine only) . . 285 L (75.3 U.S. gal)

Lube Oil System 104 L (27 U.S. gal)

Oil Change Interval 250 hr

Caterpillar DEO 10W30 or 15W40

Rotation (from flywheel end) ccw or cw

ACCESSORY EQUIPMENT

24V 60 Amp Alternator

24V to 32V Electric Shutoff OP/WT/OS — ETS, ETR

24V Electric Starting Motor

Air Starting Motor

Alarm Contactors — Oil Pressure, Water Temperature

Auxiliary Drive Pulley and Shaft

Auxiliary Sea Water Pump — Self and Non-Self Priming

Crankshaft Pulleys

Deep Sump Oil Pan

Duplex Fuel Filter

Duplex Oil Filter

Engine Mounted Instrument Panel — LH 8-hole,

RH 16-hole

Exhaust Elbow, Flange, Flexible Fitting

Front Accessory Drives — Upper and Lower LH

Front Enclosed Clutch

Front Stub Shafts

Generators — 415 to 715 kW

Air Filter, Bearing Temperature Detectors, Low

Voltage Extension Box, RFI Filter, Voltage Regulator

(Auto, Digital, Manual)

Heat Exchanger

Keel Cooling Connections

LH Fuel Priming Pump

Load Sharing Governor

Manual Air Start Control — RH, LH

Pyrometer and Thermocouples

SAE No. 0 Flywheel and Housing

Solenoid Shutoff — ETS, ETR

Spare Parts Kit

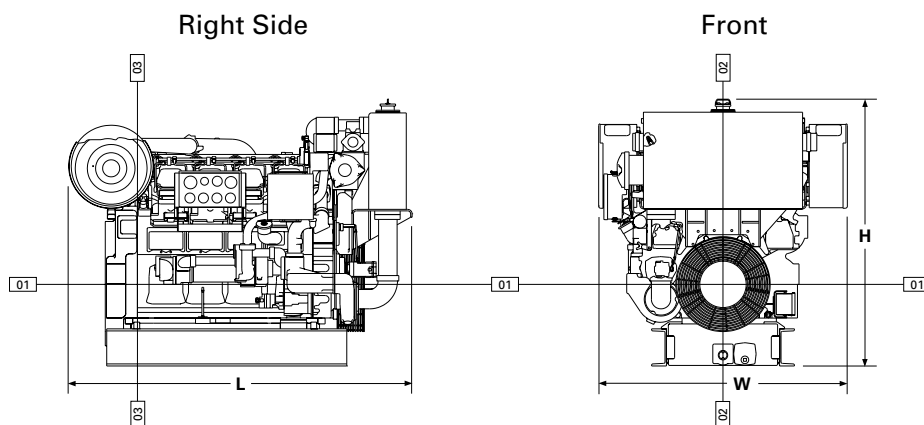
Sump Pump

PERFORMANCE DATA

Turbocharged-Aftercooled

TM3505-04 Aftercooler Temperature 30°C (86°F)

600 bkW (.8 pf) 804 bhp			
% load	bkW	Lph	gph
100	593	152.7	40.3
75	441	114.5	30.2
50	293	77.1	20.4
30	177	49.2	13.0



DIMENSIONS*

	mm	in.			
Overall Length	2350.4	92.5			
Length from front to rear face of block	1880.0	74.0			
Length from rear face of block to back of flywheel housing	470.4	18.5			
Overall Height	1826.2	71.9			
Height from crankshaft centerline to top of engine	1267.7	49.9			
Height from crankshaft centerline to bottom of rails	558.5	22.0			
Overall Width	1703.0	67.1			
Width from crankshaft centerline to port side (left side)	851.5	33.5			
Width from crankshaft centerline to starboard side (right side)	851.5	33.5			

*Illustrations and dimensions from drawing: 1W9125

RATING CONDITIONS

Engine Performance Parameters

Power.....	±3%
Specific Fuel Consumption	±3%
Fuel Rate	±5%

Ratings are based on SAE J1228/ISO8665 standard conditions of 100 kPa (29.61 in. Hg), 25°C (77°F), and 30% relative humidity. These ratings also apply at ISO3046/1, DIN6271/3, and BS5514 conditions of 100 kPa (29.61 in. Hg), 27°C (81°F), and 60% relative humidity.

Fuel rates are based on fuel oil of 35° API [16°C (60°F)] gravity having an LHV of 42 780 kJ/kg (18,390 Btu/lb) when used at 29°C (85°F) and weighing 838.9 g/L (7.001 lb/U.S. gal).

Additional ratings may be available for specific customer requirements. Consult your Caterpillar representative for additional information.

Performance data is calculated in accordance with tolerances and conditions stated in this specification sheet and is only intended for purposes of comparison with other manufacturers' engines. Actual engine performance may vary according to the particular application of the engine and operating conditions beyond Caterpillar's control.

TMI Reference No.: TM3505-04 (6-15-01)

Materials and specifications are subject to change without notice.

LEHM1637-00 (6-01)

The International System of Units (SI) is used in this publication.

Printed in U.S.A.

©2001 Caterpillar
All rights reserved.