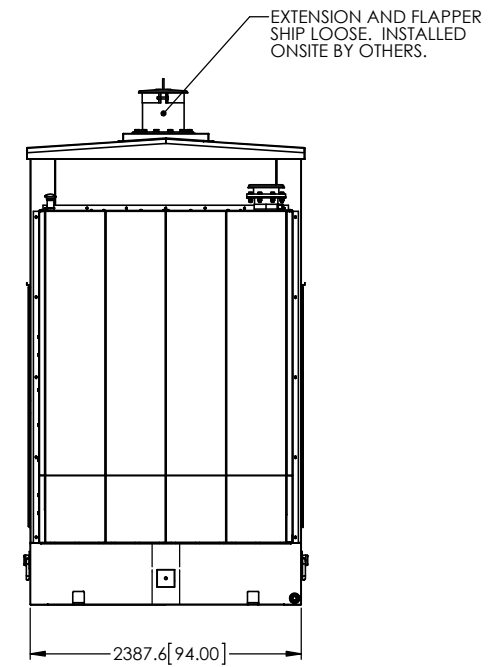
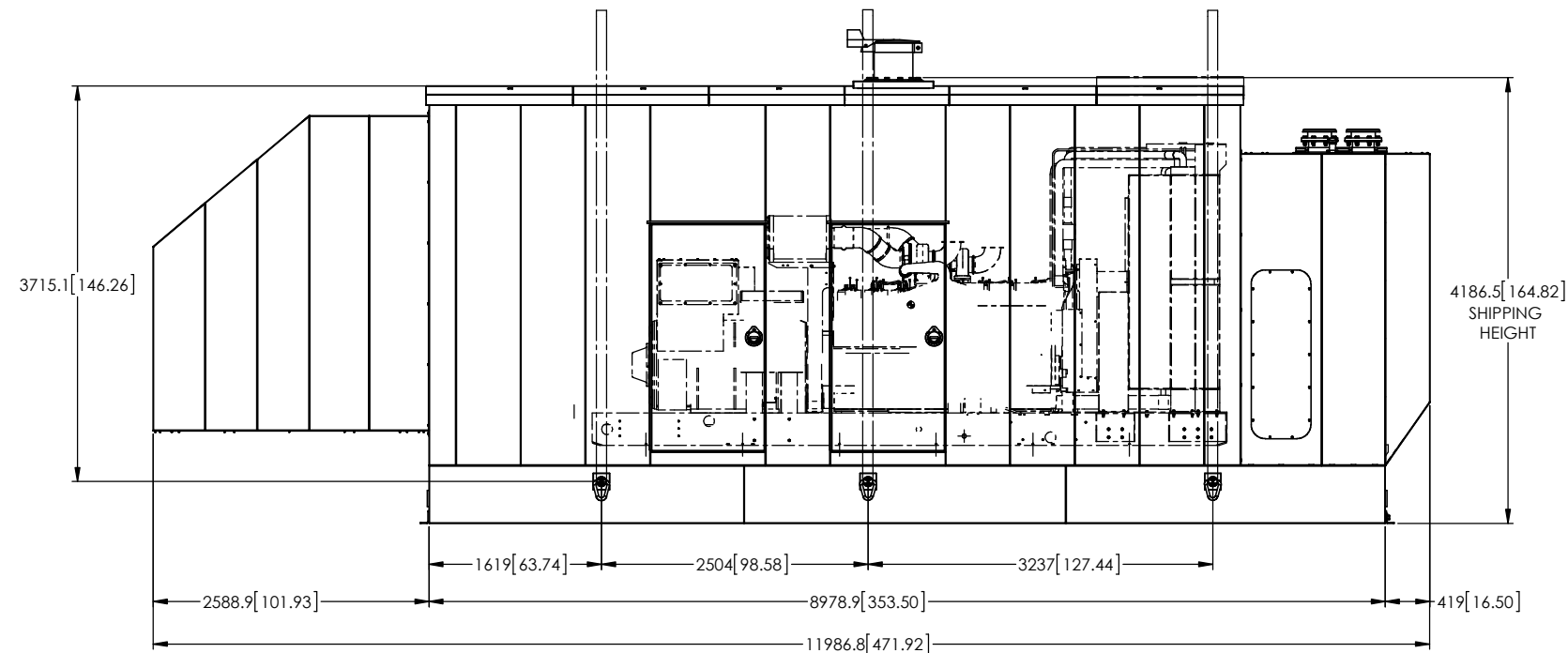


NOTE:
ALL STRAPS MUST BE SECURED EQUALLY



WEIGHTS (LBS)			
TANK	GENSET	ENCLOSURE	TOTAL
9,992	25,330	10,934	50,881

HENNIG
Perfect machine protection

Hennig Enclosure Systems
MACHESNEY PARK, ILLINOIS
www.hennigenclosuresystems.com

THE DESIGN REFLECTED ON THIS DRAWING WAS ORIGINATED BY AND IS EXCLUSIVE PROPERTY OF HENNIG INCORPORATED. IT IS FURNISHED FOR INFORMATION PURPOSES TO HENNIG CUSTOMERS ONLY AND MAY NOT BE DUPLICATED, OR COPIED IN ANY WAY, NOR MAY ANY OF THE INFORMATION CONTAINED HEREIN BE PASSED ON TO UNAUTHORIZED PERSONS WITHOUT THE APPROVAL OF HENNIG INCORPORATED.

ALL DIMENSIONS ARE IN MM [INCHES]- UNLESS OTHERWISE SPECIFIED | DO NOT SCALE THE DRAWING

Drawn By: CG	Date: 1/9/12	Gen-Set Make: Cummins
Checked By: MS	Date: 1/9/12	Gen-Set Size: 1250 KW
Customer: NRG	Drawing No.: GE-1105	